



SAFETY EDGE

# BS2 - BS4 - BS5 - BS8



EN

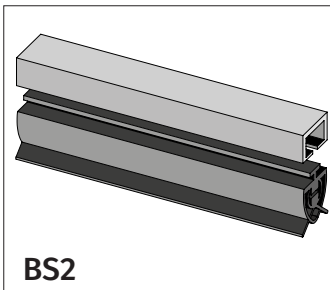
v1.0  
REV:12/2022

## USER/INSTALLER MANUAL

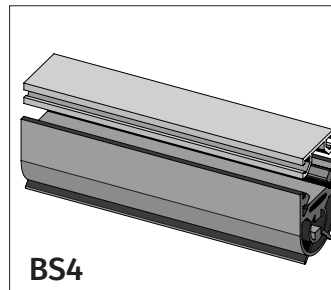


Safety edges are an effective means of protecting the physical integrity of people and animals, as well as preventing the possibility of vehicles and other objects being damaged. They can be applied to various types of supports, in different ways, such as sectional doors, swing gates, sliding gates, etc.

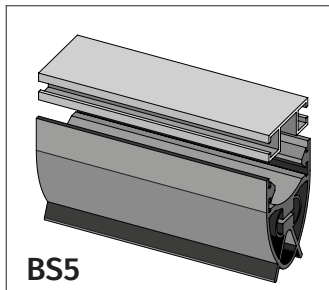
## MODELS



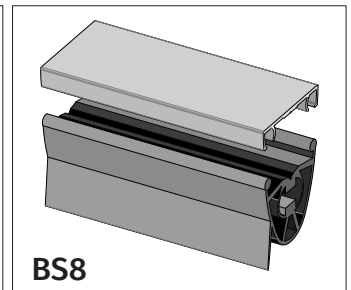
**BS2**



**BS4**

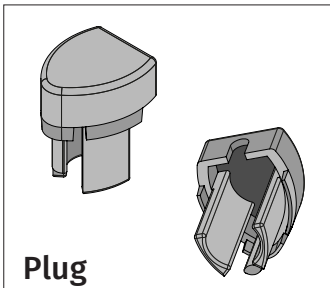


**BS5**

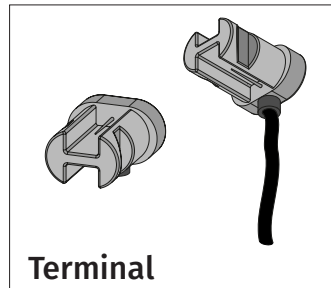


**BS8**

Safety edges are accompanied by:

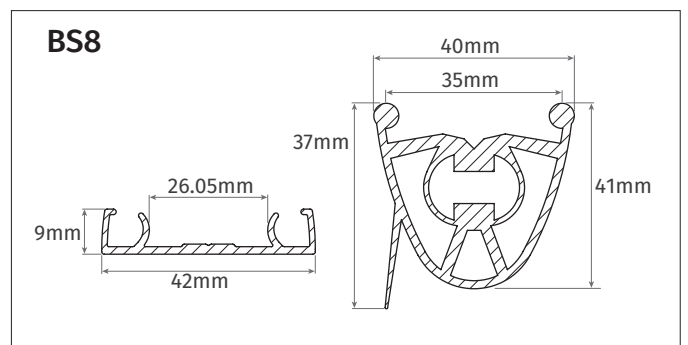
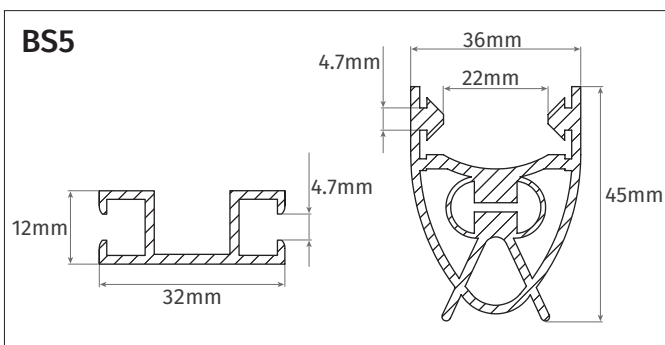
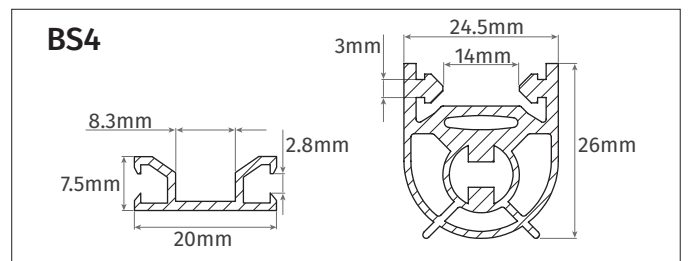
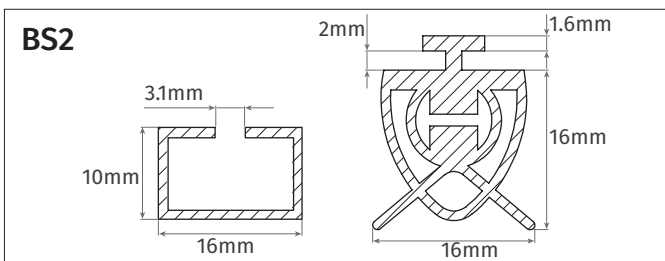


**Plug**



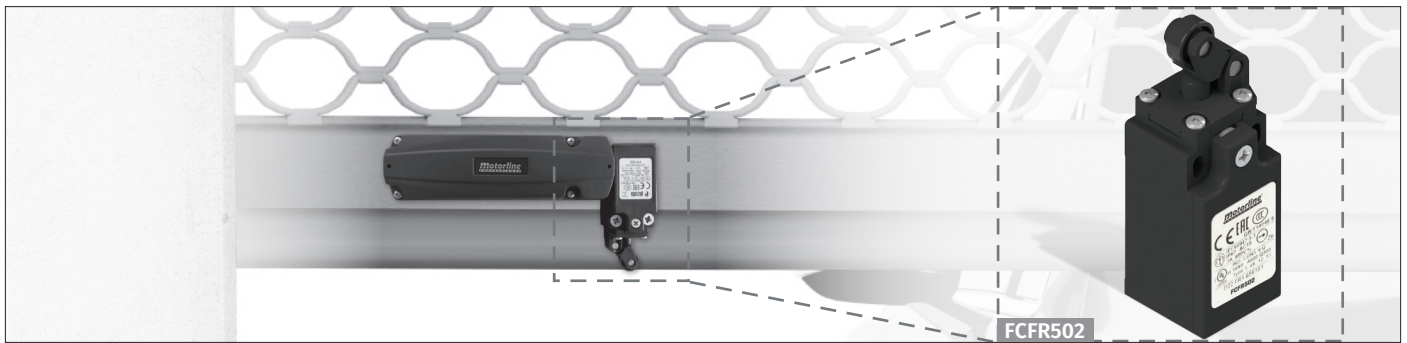
**Terminal**

## TECHNICAL DRAWINGS OF RUBBER



## ROLLING GRILLES OR SECTIONAL DOORS

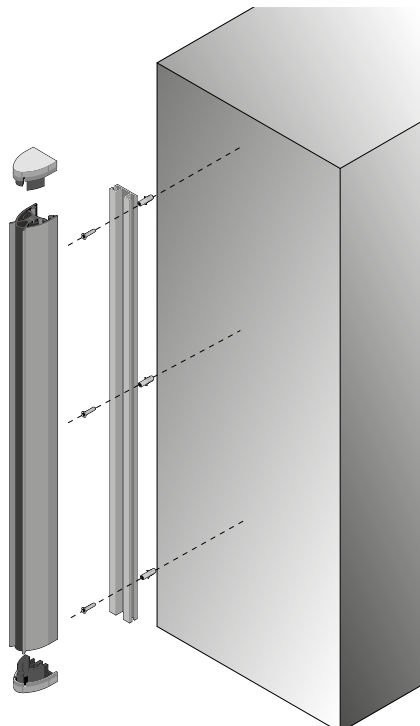
When the rubbers are installed in vertical movement devices, such as rolling grilles or sectional doors, it requires the placement of a unidirectional limit switch (**FCFR502**). This will cause the order sent by the rubber to be ignored when the device is closed.



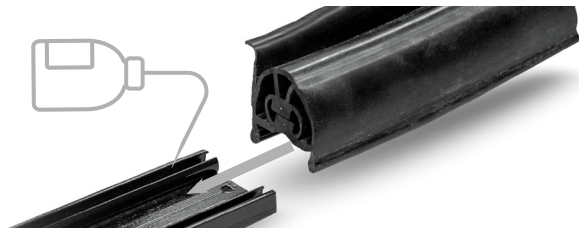
FCFR502



### INSTALLATION



1 • Insert the rubber into the rail. If you have difficulty sliding the rubber in the rail, apply a little soap-based liquid, such as dishwashing liquid.

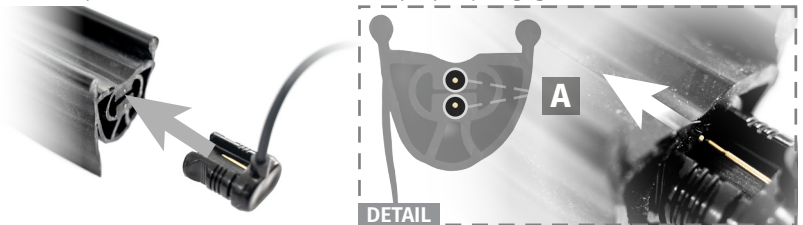


2 • Cut the excess rubber (in case it exists).

**Note** • When sliding the rubber on the rail, there is a tendency to stretch. Leave enough rubber to return to its normal state **before cutting**.

3 • Place the terminals.

**Note** • Pay attention that the needles are properly engaged in Points A.



4 • Connect the cables to the emitter or control board.

**Note** • You can use a Multimeter to see if it is working correctly (see example).



Digital Multimeter

**Example** • When the safety edge is not pressed, **8,2 kOhm** should appear on the display.



Digital Multimeter

**Example** • When the safety edge is pressed, **0** must appear on the display.

5 • Confirm in the manual of the control board or emitter, to finish the assembly.



### ANOMALIES

If there is any kind of error, the gate will not close.

Check on the **MC50**, **MC60**, **MX14** device, or **barrier LED flashlight module (THTSIG15LEDM)** that the corresponding LED is on permanently.