



EF25

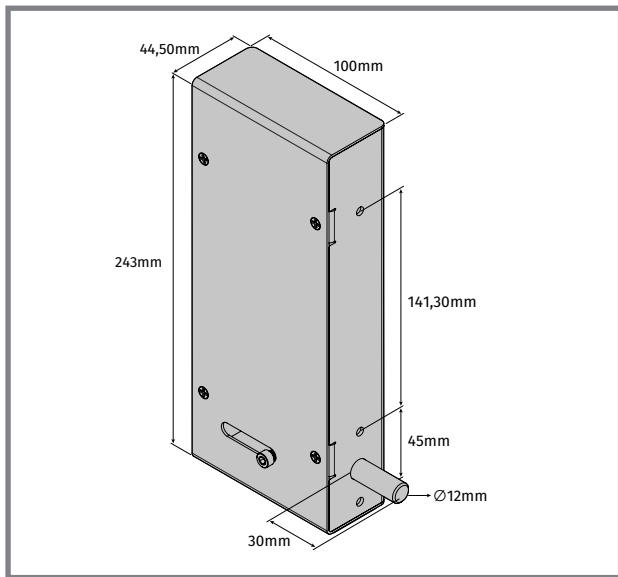
USER'S / INSTALLER'S MANUAL

Correct disposal of this product (electrical and electronic equipment waste).

V2.0
REV. 06/2024

THE PRODUCT

The EF25 lock has been developed for application on sectional doors controlled by the MC60 control board.



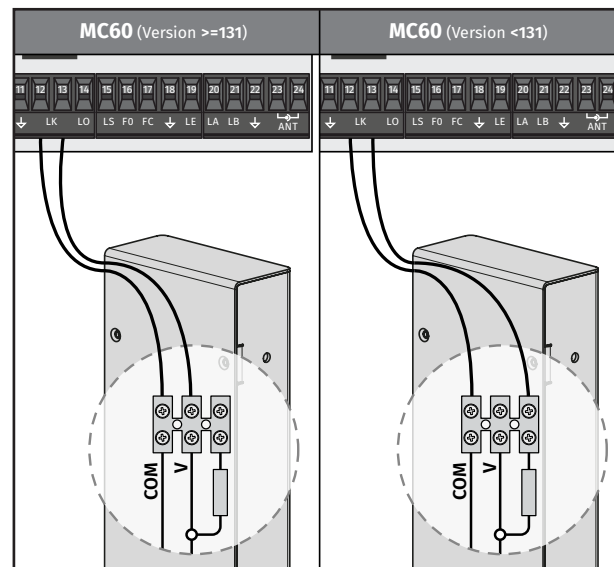
SAFETY INSTRUCTIONS

- The supplier is responsible for the proper use of the product with the hardware for which it is designed.
- The supplier is responsible for the safety standards taken into account when installing the equipment for any use that may occur.
- The supplier is responsible for the identification of the product when used with components sold by the manufacturer.

TECHNICAL CHARACTERISTICS

• Power Supply	12V DC
• Maximum current	1.3A
• Maximum impulse time	100ms
• Weight	1.4kg
• Packaging dimensions	262mm x 116mm x 68mm

CONNECTION SCHEME TO MC60 C. BOARD



Attention: Check the MC60 version before making the connection.

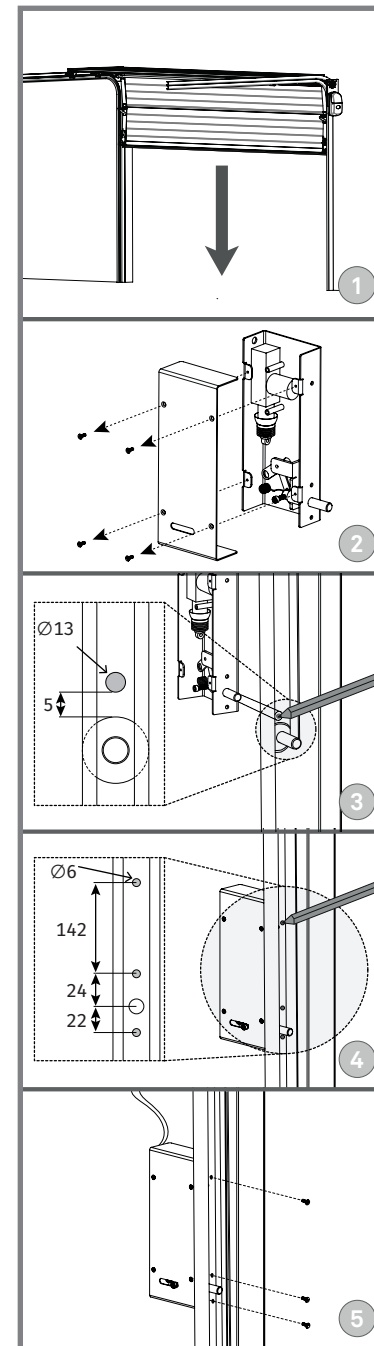
INSTALLATION

The EF25 lock must be installed with a minimum margin of 5 mm from above one of the wheels on the floor guide. When the control board receives an opening order, it must first retract the lock and then initiate the opening maneuver to ensure that the lock never gets stuck by the gate.



The EF25 lock is designed to work along with the MC60 control board. Only with this control board the correct operation of the components is guaranteed!

The EF25 is a lock of double direction, one impulse will be to open and the other, to close.



- 1 • Close the gate to determine the installation location (img. 1).
- 2 • Remove the cover of the lock unscrewing the 4 bolts (img. 2).
- 3 • Make a mark for a $\varnothing 13$ mm hole, 5mm above a wheel of the gate to pass the lock's latch.



- 4 • Reopen the gate.
- 5 • Drill the hole using a $\varnothing 13$ mm borer.
- 6 • Aim switching latch in the hole and make the remaining markings.
- 7 • Drill the holes with $\varnothing 6$ mm drill, apply the lock in the guide and tighten with 3 screws and nuts (img. 4).

- 8 • Refit the cover into the lock and close it with the 4 bolts.
- 9 • Make the electrical connections as shown in the diagram on the left.

Measures in (mm).