



motorline
PROFESSIONAL


MX92N

USER / INSTALLER MANUAL



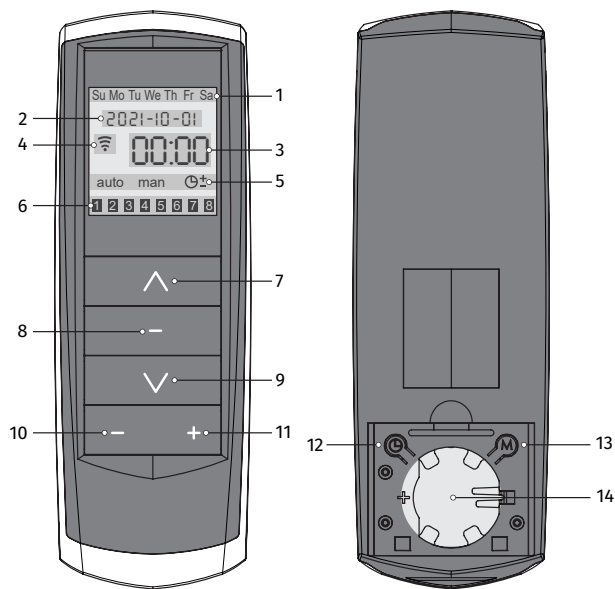
V1.4
REV. 11/2024

EN

 Correct disposal of this product (Electrical and electronic equipment waste).

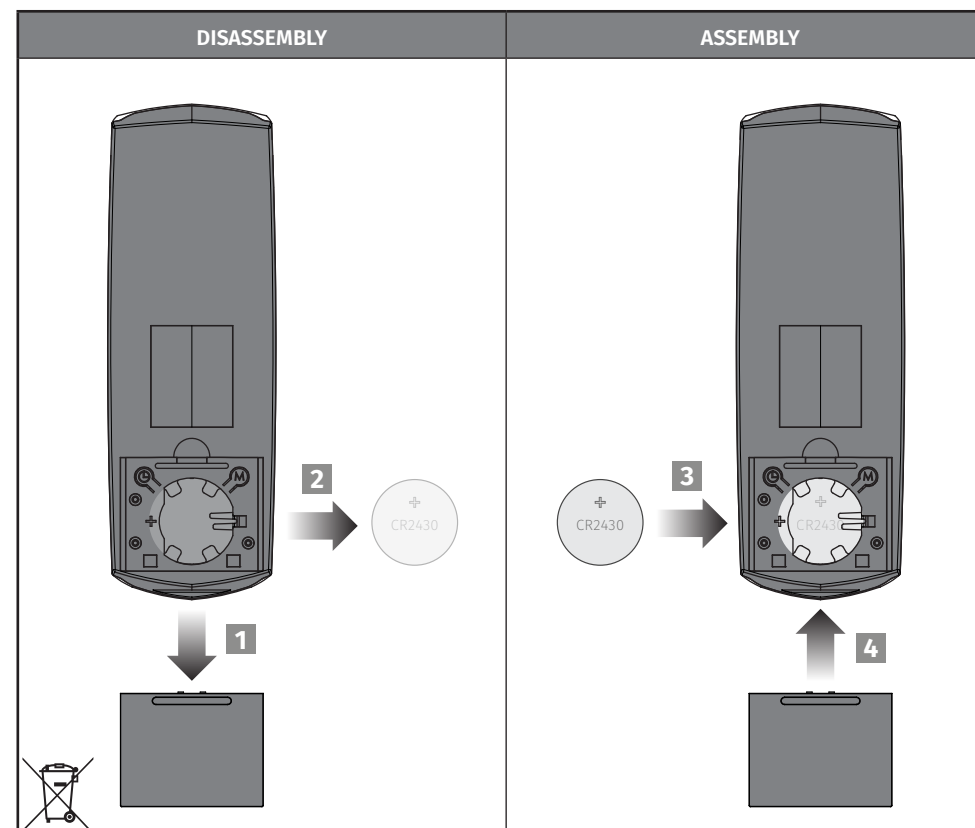
Technical characteristics	
• Power Supply	3V(CR2430)
• Working temperature	-20 to 55°C
• Transmission frequency	433MHz
• Range	40m
• Number of channels	8 channels and 2 groups
• Code type	Rolling Code
• Dimensions	45x130x12mm

1	Week days
2	Current date
3	Current hour
4	Signal transmission
5	Programming modes
6	Channel
7	Up
8	Confirm/Stop
9	Down
10	Return
11	Advance
12	Time
13	Select
14	Battery



DESCRIPTION:	
man • manual	Su • Sunday
auto • automatic	Mo • Monday
⌚ ± • random	Tu • Tuesday
	We • Wednesday
	Th • Thursday
	Fr • Friday
	Sa • Saturday

SWAP BATTERY



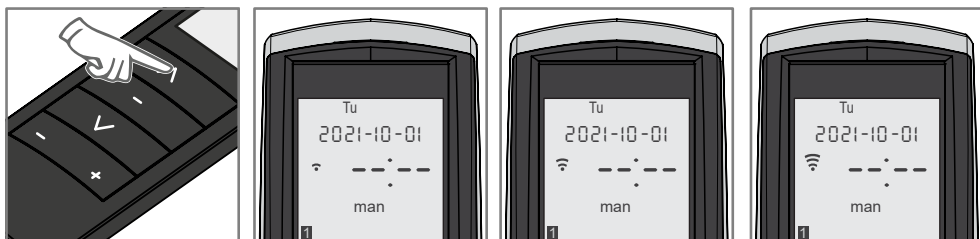
PRE-PROGRAMMING

- When a battery is placed on the transmitter, this turns on all the characters on the display for 2 seconds. After this time stay in normal working.
- If more than 10 seconds passes without pressing any key, the remote control automatically exits programming and returns to standby mode, without record any change.

• Factory values:

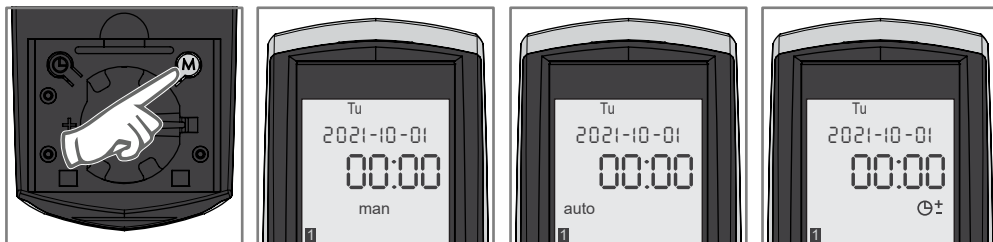
- the display shows initially: wednesday, 2014-01-01, 00:00h.
- manual mode active.
- Group 1 has the channels 1, 3, 5 and 7 memorized.
- Group 2 has the channels 2, 4, 6 and 8 memorized.

TRANSMISSION SIGNAL



Each time you press \wedge or \vee , the display will show 📶 in dynamic mode, indicating the signal sending. The signal goes off when you stop pressing the button.

CONTROL OPTIONS



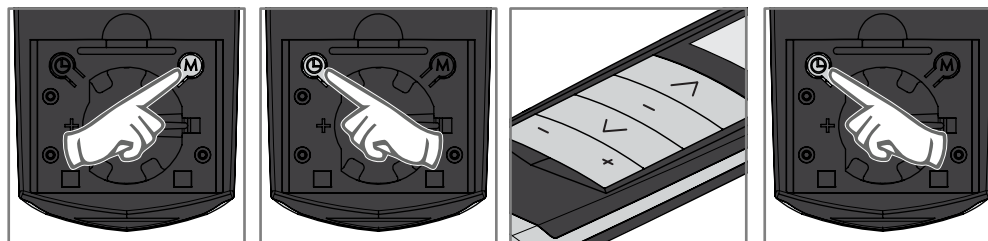
• Use **M** to scroll through the different controls.

• **MANUAL CONTROL (man)**
No timer function.

• **AUTOMATIC CONTROL (auto)**
With timer function.

• **RANDOM CONTROL (\oplus)**
With random timing function. The random remote control is implemented in accordance with Standard timing (approx. 15 min.).

SET CURRENT DATE AND TIME



1 • Press **M** until the remote control is in manual mode.

2 • Press ⏏ for 3 seconds and the year will flash.

3 • Use the - and + to scroll through the various values that define the date / time and the \wedge \vee keys to change each value.

4 • In the end, press the ⏏ button to confirm.

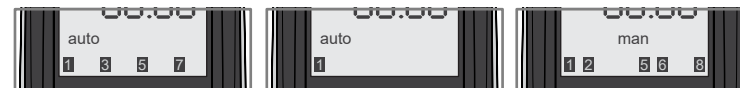
CHOOSE CHANNEL/GROUP



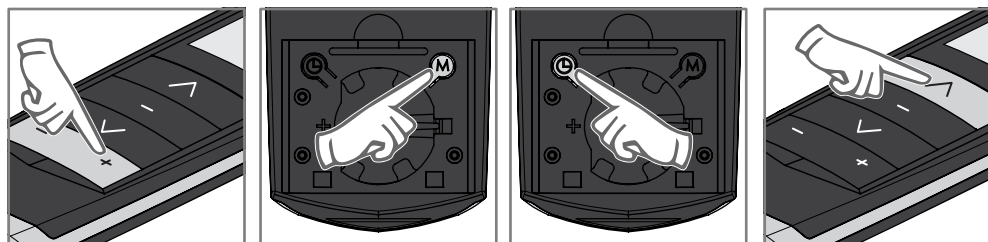
The display always shows what the channel functions.

When you press \wedge - \vee an order will be transmitted by the indicated channel at the bottom of the display.

In automatic or random mode, use - and + to select the group 1 or group 2. Press ⏏ for 3 seconds to enter the selected group. Use - and + to select channels. To set a channel in the group, press \wedge once. To remove if from the group, press \vee once. When the number is flashing, it means that does not yet belong to the group. When the number is fixed, it belongs to the group.



PROGRAMMING TIMER



1 • Select the channel you want using the buttons - and +.

2 • Press **M** until if you put in automatic mode (auto).

3 • Press ⏏ for 3 seconds. The **Su** will flash and the zone of the time will appear empty.

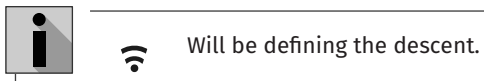
4 • Using \wedge \vee , select the day you want to program.

PROGRAMMING TIMER



5 • Press + to now set the time and use \wedge / \vee to change it.

6 • Press again + to set the minutes and use \wedge / \vee to change them.




NOTE • When you end the ascent and descent programming, the system automatically advances to the next day. If you want to quit programming press \odot for 3 seconds.



Group 1 and 2 doesn't work with timer.

REMOVE TIMERS

Select the channel you want and insert  for the opening and closing times. Timers can only be deleted individually (channel by channel).



- MX92 was developed to function with MC4SP, MC4SPI, MC70, MC16 and MC18 control boards. When using other control boards may be working incompatibilities.
- The 3V lithium battery (CR2430) should be replaced once a year to ensure the correct operation of the transmitter;
- To replace the dead battery remove the plastic cover, remove the battery out and insert the new one, respecting the polarity shown on the container;
- The used battery must be placed in containers intended for this purpose.

SAFETY INSTRUCTIONS



(Applicable in countries with recycling systems). This marking on the product or literature indicates that the product and electronic accessories (eg. Charger, USB cable, electronic material, controls, etc.) should not be disposed of as other household waste at the end of its useful life. To avoid possible harm to the environment or human health resulting from the uncontrolled disposal of waste, separate these items from other types of waste and recycle them responsibly to promote the sustainable reuse of material resources. Home users should contact the dealer where they purchased this product or the National Environment Agency for details on where and how they can take these items for environmentally safe recycling. Business users should contact their vendor and check the terms and conditions of the purchase agreement. This product and its electronic accessories should not be mixed with other commercial waste.



This marking indicates that batteries should not be discarded like other household waste at the end of their useful life. Batteries must be delivered to selective collection points for recycling.



The different types of packaging (cardboard, plastic, etc.) must be subject to selective collection for recycling. Separate packaging and recycle it responsibly.

Simplified EU Declaration of Conformity

The undersigned **MOTORLINE ELECTROCELOS, S.A., with registered Travessa do Sobreiro, n.º 29, 4755-474 Rio Côvo (Santa Eugénia), Barcelos**, declares that the present type of radio equipment - **MX92N Remote Control** - complies with the Directive 2014/53/EU.

The full text of the declaration of conformity is available at the following internet address:

<https://motorline.pt/certification/mx92n>

